

MAGREGOR PARK DEC. 6/09



* ASSUMING WINTER CONDITION

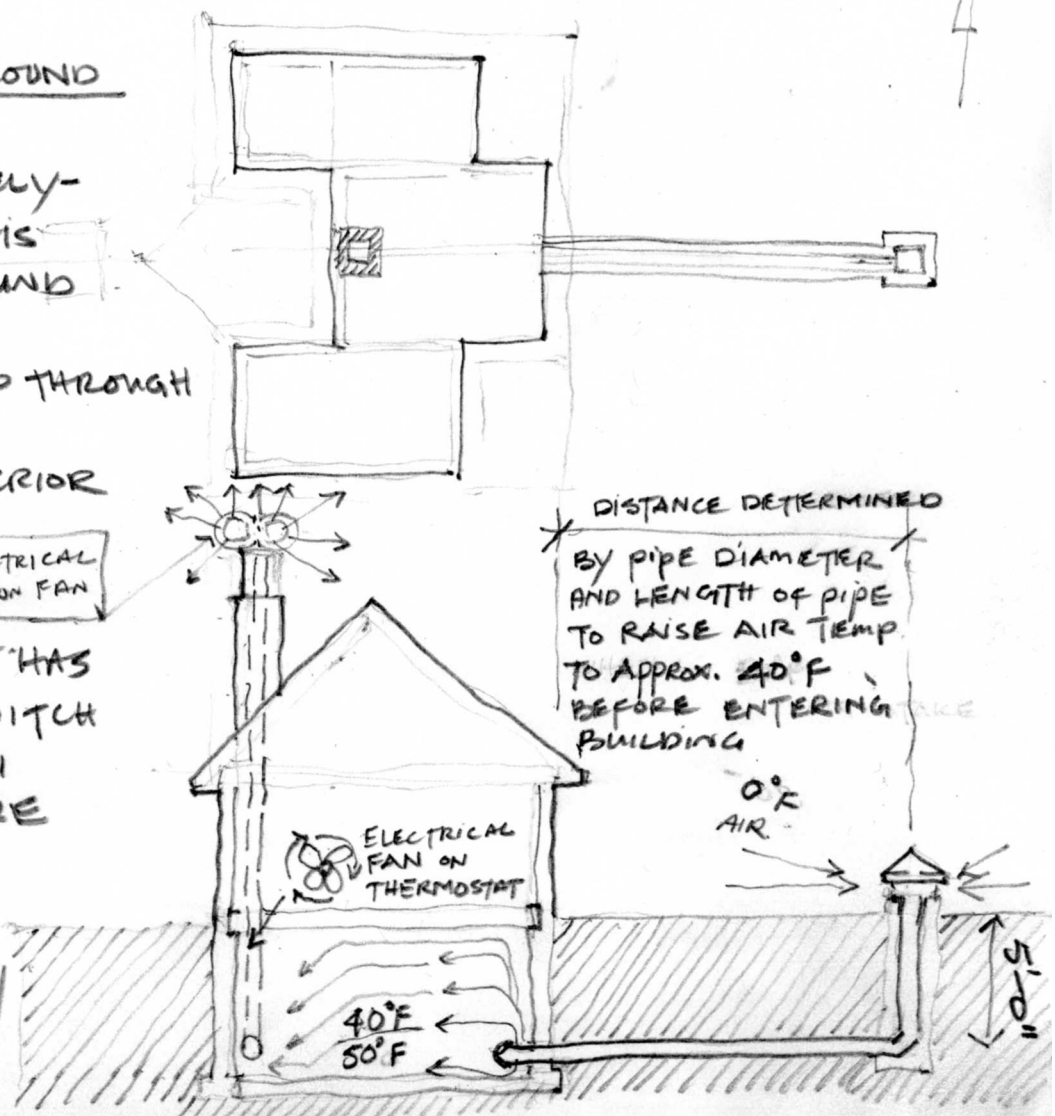
* BY PULLING AIR THROUGH THE GROUND
BELOW THE FROST LINE WHERE
THE TEMPERATURE IS APPROXIMATELY
 $55^{\circ}\text{F} - 50^{\circ}\text{F}$ - WE CAN PULL THIS
AIR THROUGH AND HAVE THE GROUND
WARM THE AIR.

* AS THIS 'WARMED' AIR IS PULLED THROUGH
THE BASEMENT AND BUILDING
IT WILL KEEP THE BUILDING INTERIOR
FROM FREEZING.

* TO ENSURE AIR MOVEMENT
AN SMALL ELECTRICAL FAN THAT HAS
A TEMPERATURE ACTIVATED SWITCH
CAN ENGAGE AT, SAY, WHEN
THE INTERIOR AIR TEMPERATURE
REACHES 40°F .

* THIS FAN CAN ALSO BE POWERED
BY SOLAR CELLS AND BATTERY

NON-ELECTRICAL
EXTRACTION FAN



DISTANCE DETERMINED
BY PIPE DIAMETER
AND LENGTH OF PIPE
TO RAISE AIR TEMP
TO APPROX. 40°F
BEFORE ENTERING
BUILDING

ELECTRICAL
FAN ON
THERMOSTAT

0°F
AIR

40°F
 50°F

5'-0"